

Biosphere reserves as an option for sustainable development in the Lower part of the Prut river basin

Prepared by Dumitru Drumea, Institute of Ecology and Geography, ULIM

Main characteristics of the area

- Lower Prut region is one of the most depressive in the DRB with total population around 70 thousand people
- Actual trends in climate change aggravate socio-economic development, state of environment and comfort of people
- Poor institutional capacities of local public authorities to facilitate communities development (infrastructure, new jobs, etc)

Prut River Basin Overview Map

Sub-basin of the Danube River Basin District

UNDP/GEF DRP Support to the development of the Prut River Basin Management Plan (WFD) - DRB pilot project



UNDP/GEF
DANUBE
REGIONAL
PROJECT



proposed for BR is around 20000 ha with potential extension till 60000 ha

important habitats are:

with total area of 960 ha and water ecosystems

with surface of – 1880 ha, and wetlands

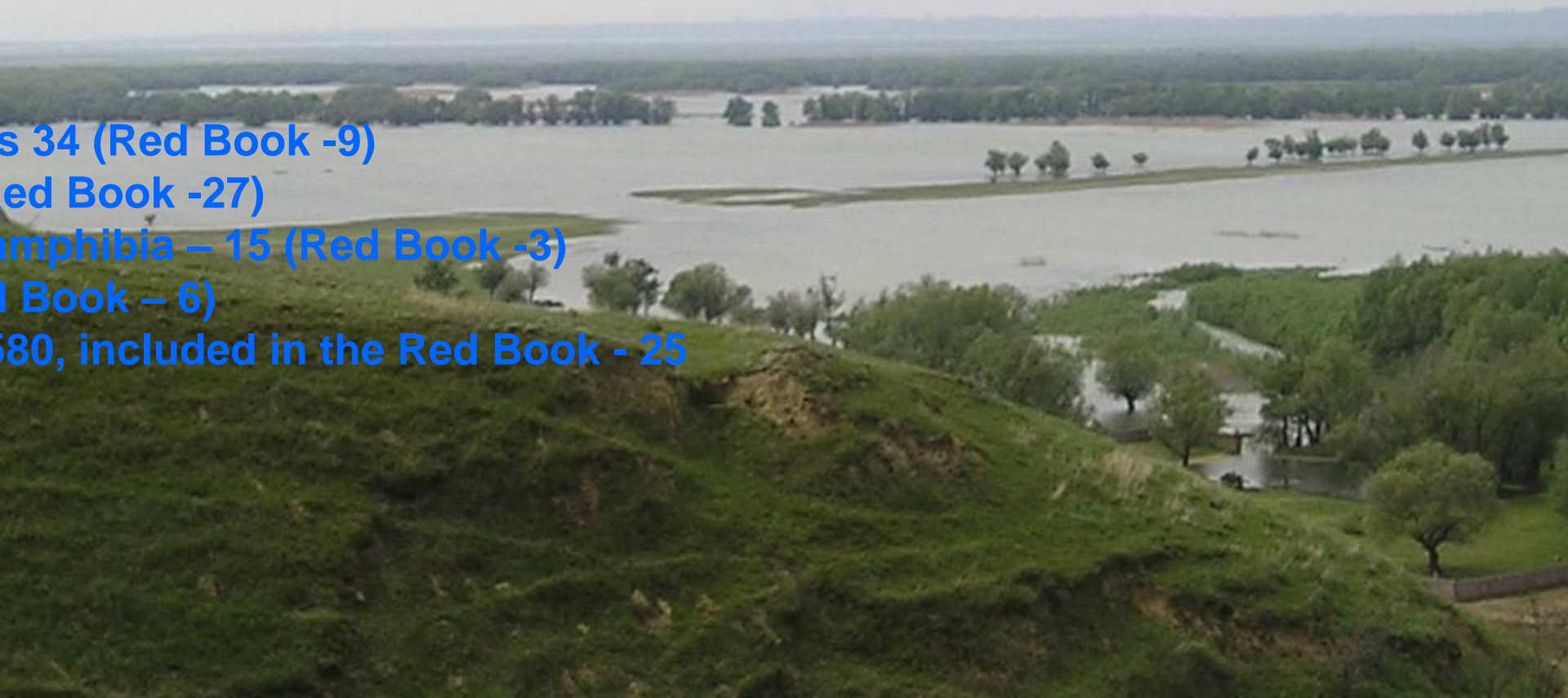
species 34 (Red Book -9)

(Red Book -27)

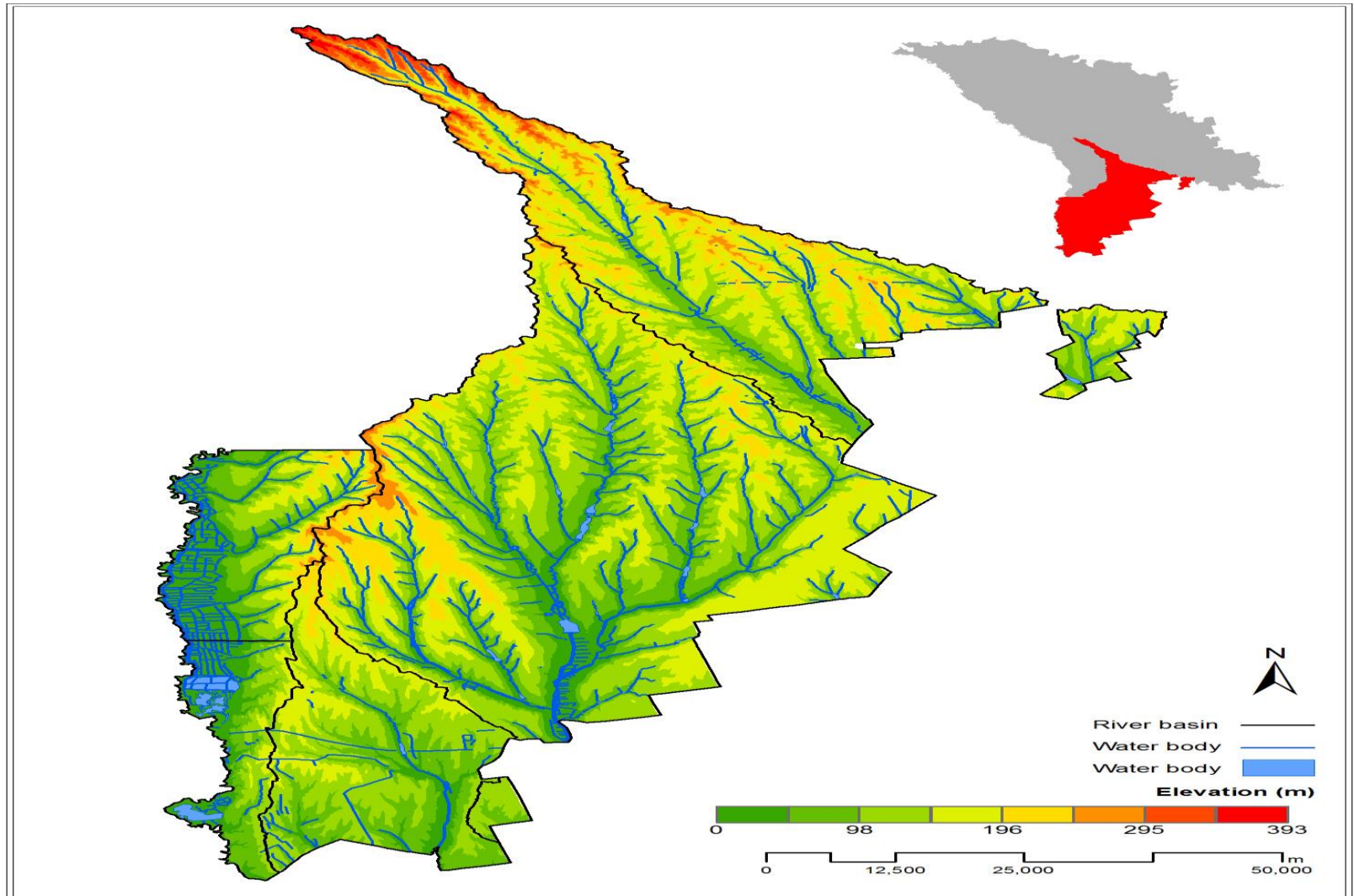
amphibia – 15 (Red Book -3)

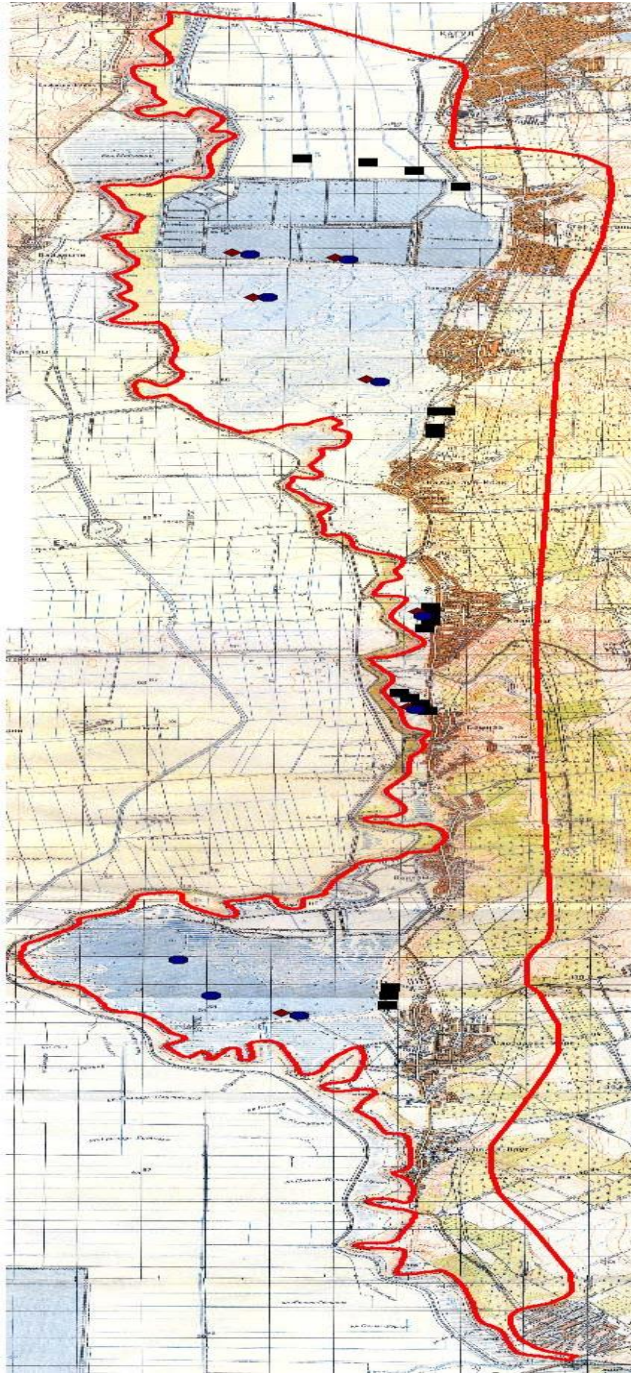
(Red Book – 6)

180, included in the Red Book - 25



Lower Prut/Danube region in Moldova





Lower Prut region with actual area of around 20000 ha and potentially up to 60000 ha

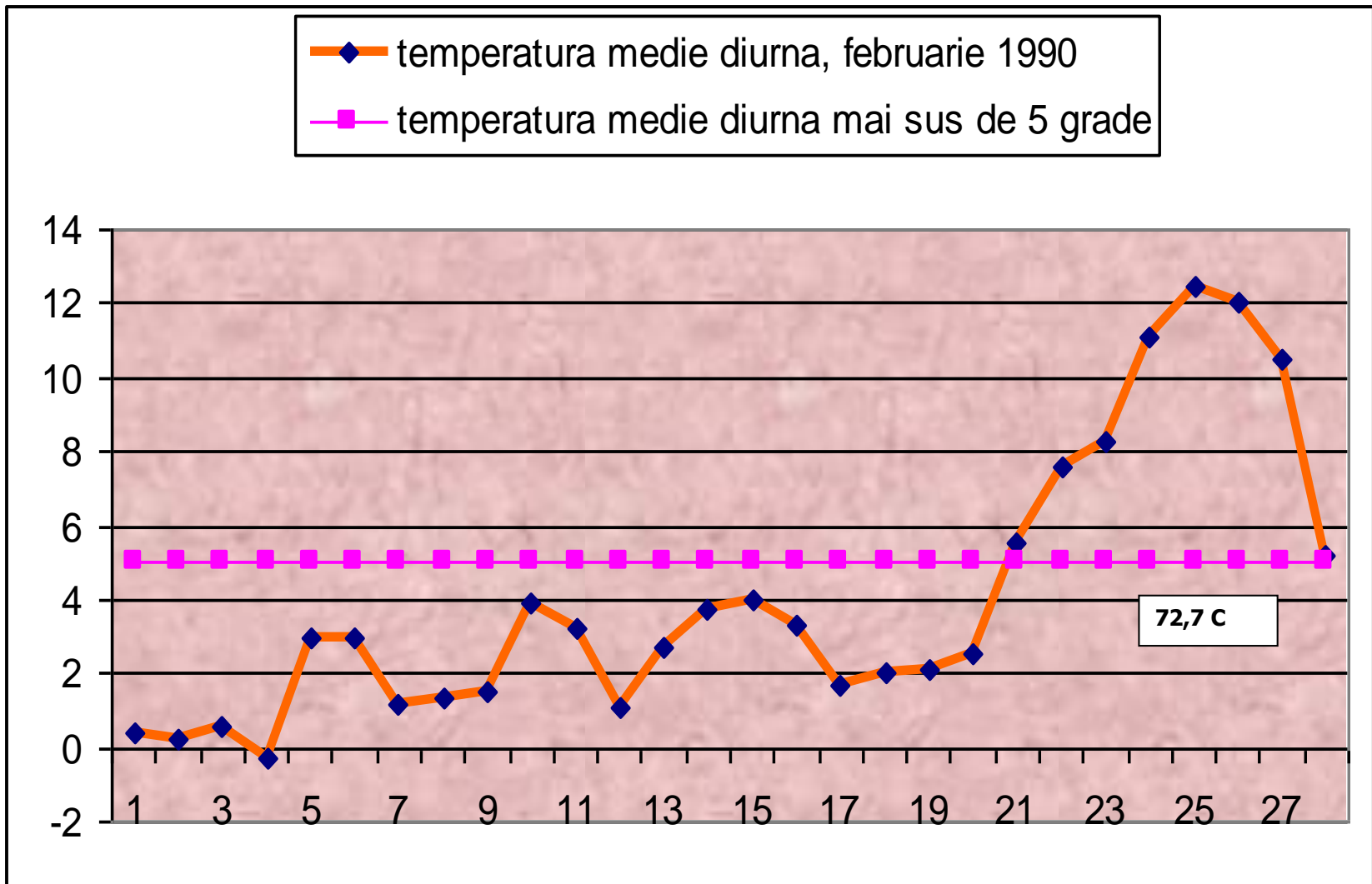
Main potential sectors for local development:

- Organic farming
- Tourism
- Adaptation to climate change
- Regional cooperation

Main environmental topics:

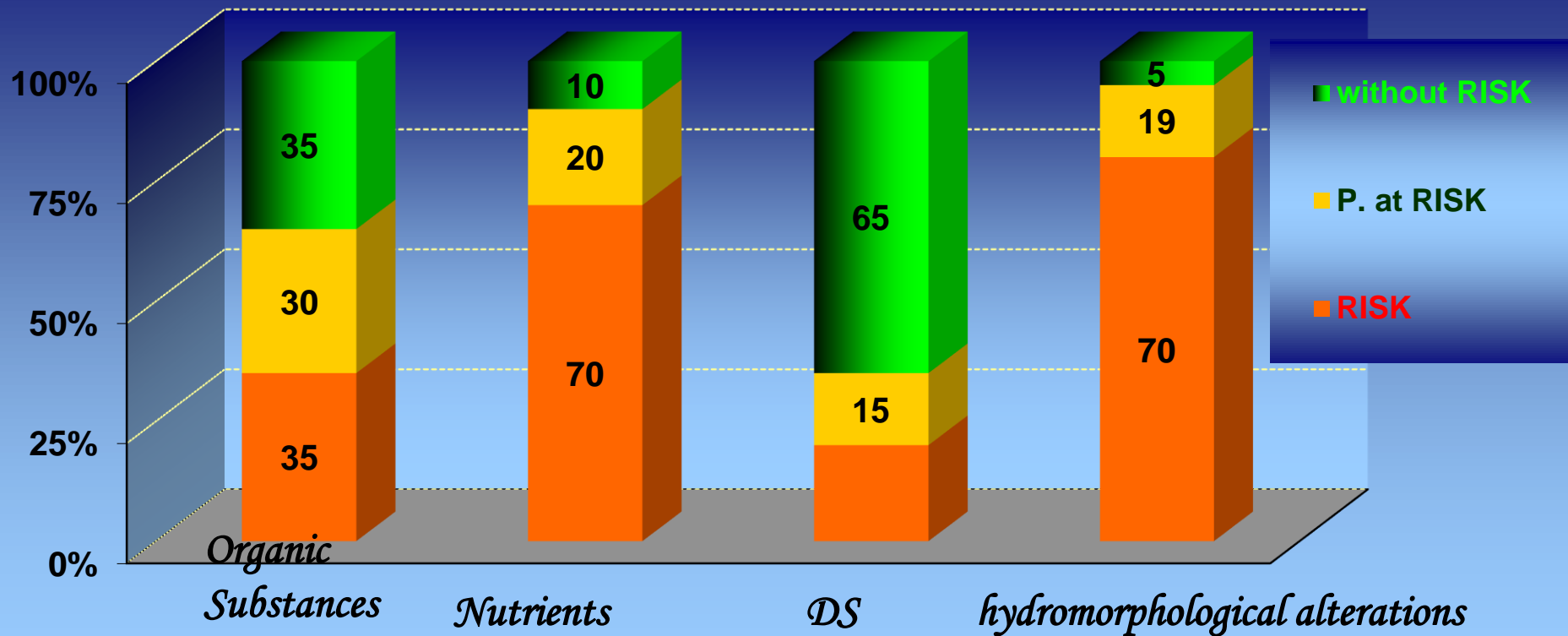
- eutrophication
- land use
- rural development
- adaptation to climate change

Lower Prut biosphere reserve was created by Decision of local Council in 2015 and actually a dossier for UNESCO headquarters to be designated internationally is under preparation



Temporal analysis of the daily winter temperature more than 5 degrees C in the Moldavian part of the Lower Danube region (Cahul)

State of water ecosystems in the Lower Prut region according to WFD



Danube strategy in Moldova -vision of local authorities (based on the consultation meetings)

- Mission – to help communities to achieve sustainable development goals
- The wider context: Poverty reduction, strengthening of institutional capacities, development of infrastructural projects.
- Acceptance that 'European integration' is a long term process and not an end in itself, partial steps are needed to apply it.
- The strategy lists five outputs:
 - 1 - facilitate development of local communities
 - 2 - develop plans and programmes in response to needs of local communities located in candidate biosphere site
 - 3 - link to other frameworks and sectors
 - 4 - establish and consolidate partnerships for cooperation on the Danube wide level
 - 5 - develop and effectively manage available resources

Main aspects for development of the biosphere area “Lower Prut” as a model for implementation of the Danube Strategy

Objective 1. Strengthening of cooperation RO-UA-MD in natural resources management based on EU environmental Directives

Actions:

- development of joint actions community to community based on common local plans
- joint implementation of provisions of developed documents and plans in the region
- attraction of the best practices in implementation of EU environmental Directives from EU to non-EU space
- management plan for Lower Prut region developed in the frame of the neighborhood EU program

Objective 2. Strengthening of institutional capacities of the Lower Prut authorities in management of the biosphere area

- Activities:
 - development of communication capacities
 - training, development of relevant programs
 - evaluation of potential for biosphere reserve as a lab for testing of different technologies e.g. adaptation to climate change, conservation of biodiversity, reduction of pollution loads, etc
 - reconstruction works aimed at better functioning of ecosystem services in the region

Objective 3. Creation of opportunities for social and economic development based on sustainable use of natural resources

- Activities:

- evaluation of the potential for natural resources use and ecosystem services
- development of traditional local trades (farming, biomass use for different purposes, medicinal plants, etc)
- development of business plans for sectoral development in the region in cooperation with RO-UA authorities
- implementation of relevant international agreements in the area as a tool for improvement of investment practices
- preparing of joint project proposal for sectors development

Objective 4. *Development of the CC adaptation activities in the biosphere areas, which could serve as a model with further development and testing of relevant technologies.*

- Activities:
 - *Attraction of best practices on management of the biosphere areas to the Lower Prut region.*
 - Development of Action plan for the management of the candidate site for the biosphere reserve “Lower Prut” with adaptation measures for the climate change.
 - Collection of information on traditional trades and theirs’ further development as an adaptation mechanism to climate change and as a model for climate change adaptation for the whole southern region of Moldova

Main challenges for environmental management in the Lower Prut region

- Meeting objectives of the EU Environmental Directives. Water framework directive – good ecological status by
- Implementation of the provisions of the Association Agreement with EU in the field of environment and further rural development
- Implementation of structural projects, especially in the field of infrastructure development in rural areas
- Harmonization of existed local agendas with EU – Moldova Association Agreement

Regional approach on the selection of measures for BR development

⇒ BASIC MEASURES:

- ⇒ minimum set of obligatory measures
- ⇒ Development of program of measures for implementation of the provisions of the EU environmental Directives in the region.
- ⇒ Identification of environmental objectives for main domains of activities such as: tourist industry, organic farming, infrastructure development,

⇒ Additional measures:

- ⇒ Development of climate change adaptation measures based on achieving of environmental objectives
 - Legislative, administrative, economic instruments
 - educational projects, research etc.