

# PW 1: SUSTAINABILITY: creating resilience

---

- ❖ Strategic planning,
- ❖ Examples of initiatives from different donors
- ❖ Needs for strategic planning in Moldova
- ❖ Potential for better coordination and communication between policy actors, funding instruments of different donors and project promoters.

# Strategic-planning-cycle



# STRATEGIC PLANNING

Enter your sub headline here

## Strategic planning Process



# Sustainability diagram



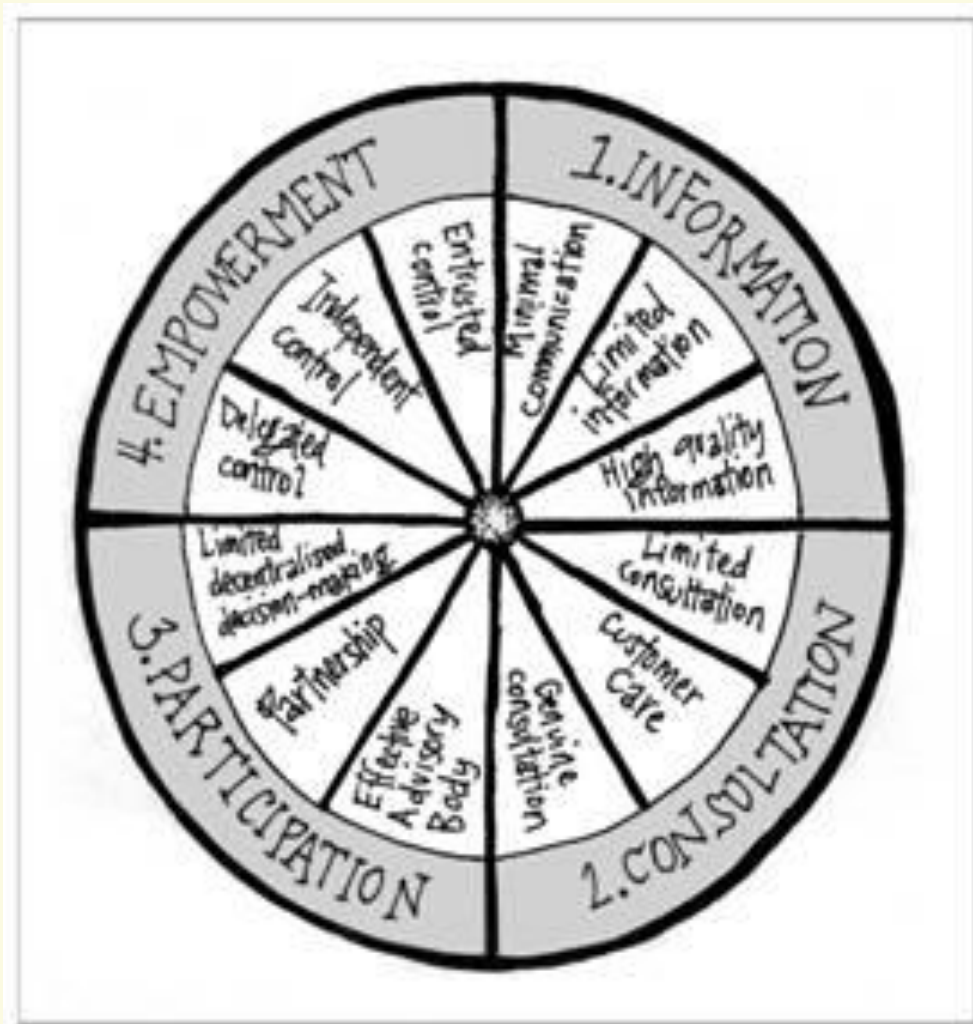
# Genuine participation – the best practice to achieve Sustainability

Valentin Ciubotaru  
NGO BIOS

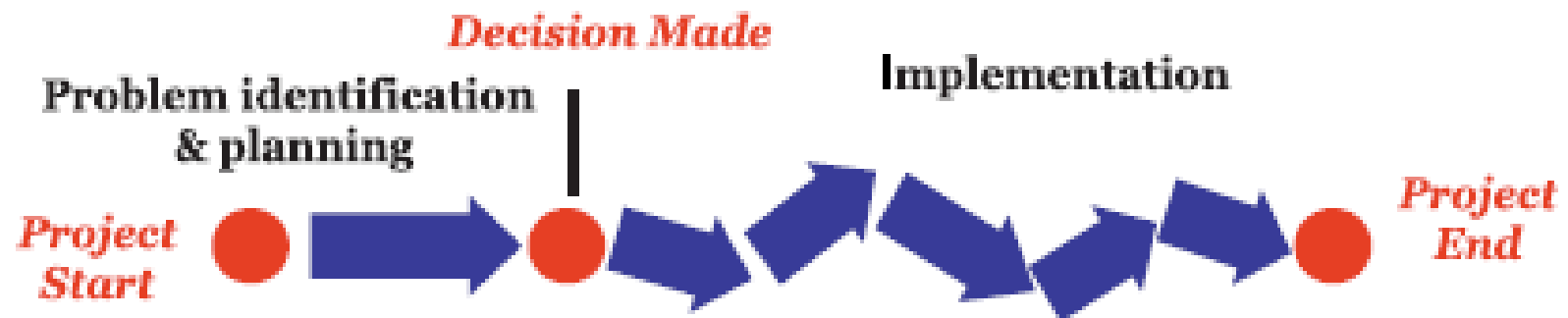
Columna str., 72/3, office #3  
Chisinau, MD 2012, Moldova  
Tel./Fax: (373-22) 54-57-33  
E-mail: [ngobios@yahoo.com](mailto:ngobios@yahoo.com);  
[valentin.ciubotaru@yahoo.com](mailto:valentin.ciubotaru@yahoo.com)  
<http://bios.org.md/>



# Wheel of participation



## Unilateral Decision-making

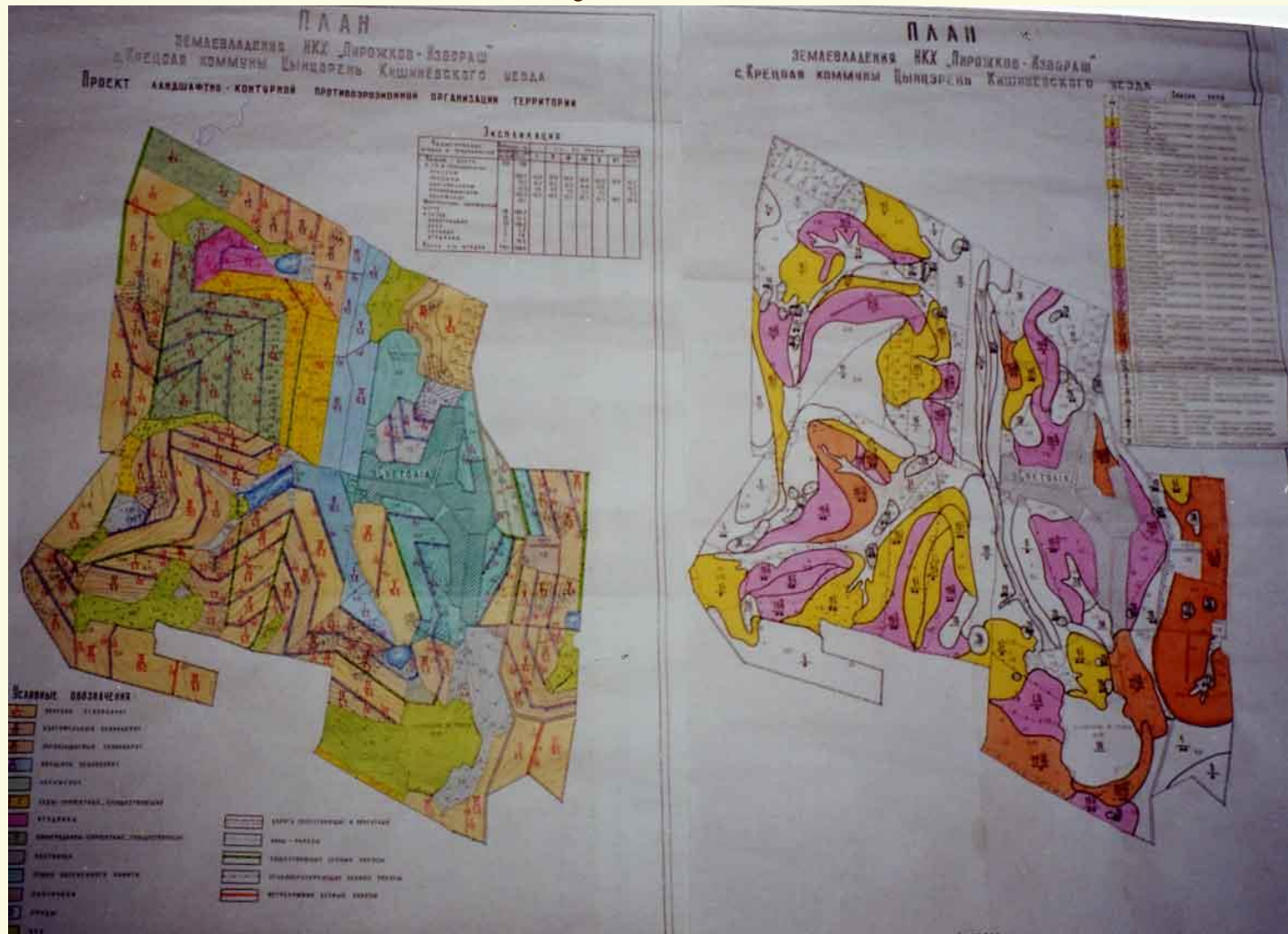


## Participatory Decision-making



Unilateral versus participatory decision-making

# Agriculture Project in Crețoaia village, Anenii Noi district, funded by NOVIB and CORDAID



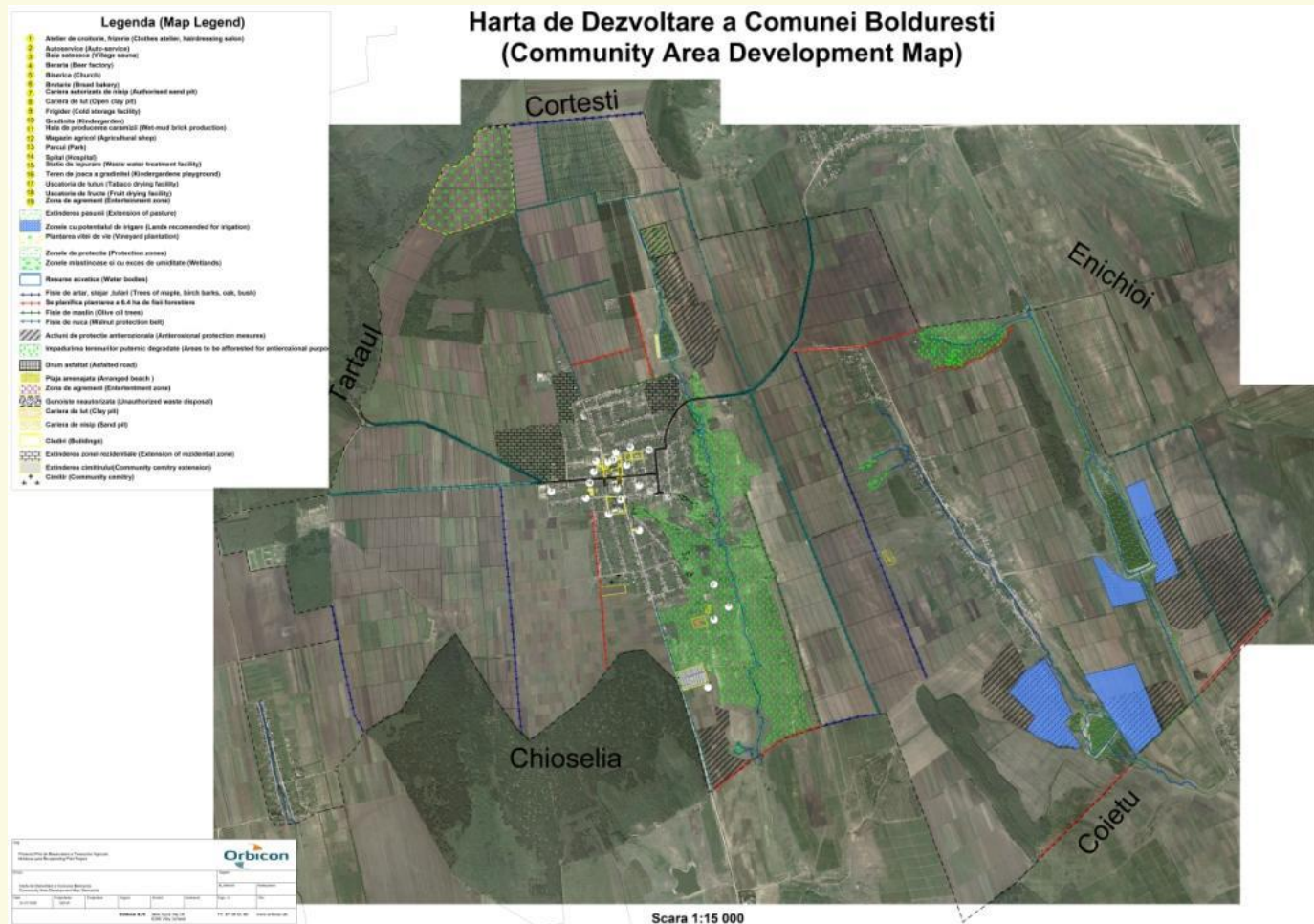




MAIA



# Development and implementation of Plans for Community Development





Some results of applying higher levels of participation  
**Sustainable Agriculture Program, funded by  
CORDAID and NOVIB**





# Sustainable Agriculture Actions in pilot plots





# Sustainable Community Actions in pilot plots





# Sustainable Community Actions in pilot plots





# Participatory education: practical actions on environmental protection and rural development





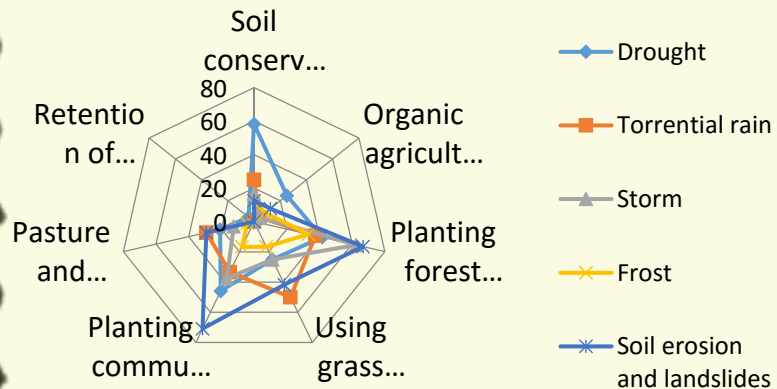
# Salubrity and Water pollution prevention Actions



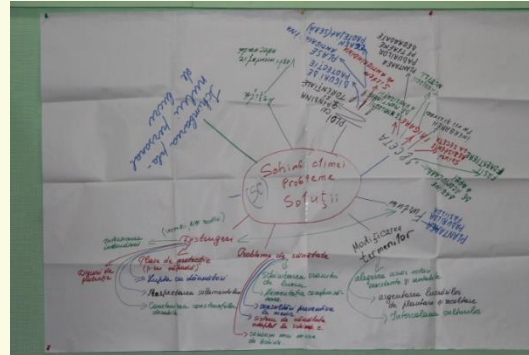
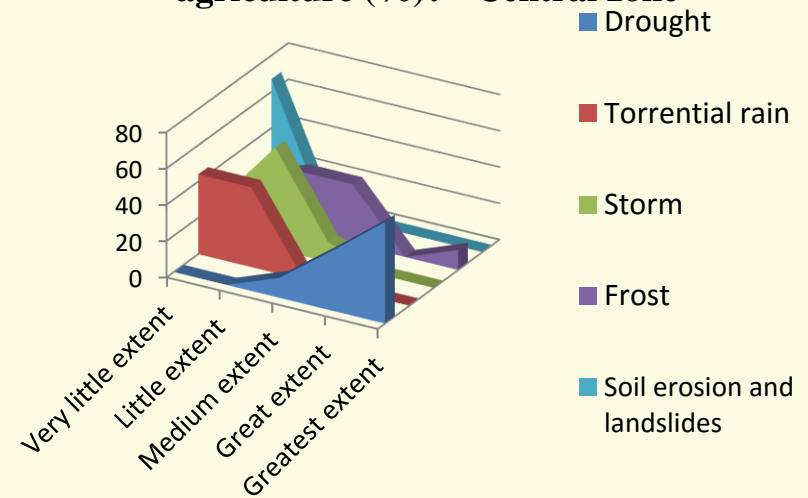
# Some results of applying higher levels of participation

## Analytical study of climate change resilience measures, funded by GEF/IFAD, 2015

Perceptions on ensuring resilience to climate change through agricultural technologies and land improvements



To what extent climate hazards affect agriculture (%)? - Central zone





# Development of the Strategy for the implementation of IFAD VI Program, funded by GEF/IFAD, 2014-2020

**The Strategy  
for Implementation of Climate Resilience through  
Conservation Agriculture by Consolidated Unit for  
Implementation of IFAD Projects, financed by GEF**



prepared by:



**NGO BIOS  
Contact data**

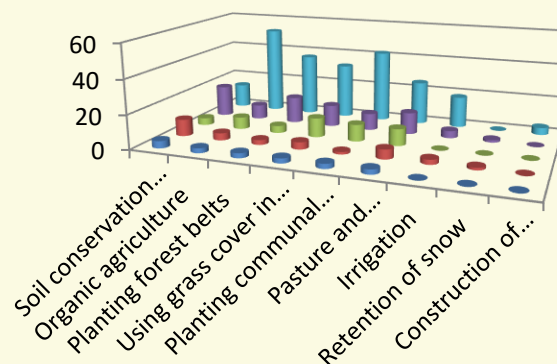
Address: 72/3 Columna str., room 05, Chisinau, MD – 2001, Republic of Moldova  
Tel./Fax: +(373-22) 54-57-33; +(373-22) 86-29-64.  
E-mail: [ngobios@yahoo.com](mailto:ngobios@yahoo.com) ; [ngobios@mtc.md](mailto:ngobios@mtc.md) , [valentin.ciubotaru@yahoo.com](mailto:valentin.ciubotaru@yahoo.com)  
Web site: [www.bios.org.md](http://www.bios.org.md)



Chisinau, Moldova, 2015



**What actions would you carry out with financial support (%)**



- Very little extent
- Little extent
- Medium extent
- Great extent
- Greatest extent

# Development of the Practical Guidelines for climate change resilience measures in framework of IFAD VI Program, funded by GEF/IFAD, 2015

Ghid Practic pentru întocmirea Planului de cheltuieli la înființarea și ameliorarea învelișurilor de ierburi pentru prevenirea și combaterea eroziunii solului



Ghidul Practic pentru întocmirea Planului de cheltuieli la înființarea și ameliorarea învelișurilor de ierburi pentru prevenirea și combaterea eroziunii solului este elaborat în cadrul Programului Rural de Reziliență Economico-Climatică Incluzivă, finanțat de Facilitatea Globală de Mediu / Fondul Internațional pentru Dezvoltarea Agriculturii.

Autorii Ghidului: Valentin Ciubotaru, Andrei Gumenovschi, Igor Bercu, Elena Bivol, Asea Timuş, Alexandru Coronovschi

Procesare computerizată: Elena Bercu

© IFAD, Asociația Obștească BIOS



Chișinău, 2015





# Some results of applying genuine participation

**The National Pilot Project “Improving the national emission inventory system in the context of emissions reporting under the LRTAP Convention” in the framework of the EU-funded project “Air Quality Governance in the ENPI East Countries AIR-Q-GOV”.**

În 2017 the Republic of Moldova was named winner of the "best small country IIR" category and was awarded this prize by CLRTAP



# NES development and implementation in the Republic of Moldova, funded by ILC

---

- **Goal:** to promote a people centred land governance at the country level.
- **Objectives**
- To set-up of a multi-stakeholder platform on land governance for policy dialogue and knowledge sharing (Change in Policy);
- Development of multi-stakeholder platform' tools and products (Change in Agenda)

# ILC Commitments

---

- 1. Secure Tenure Rights**
- 2. Strong Small-Scale Farming Systems**
- 3. Diverse Tenure Systems**
- 4. Equal land rights for women**
- 5. Secure territorial rights for Indigenous Peoples**
- 6. Locally-managed ecosystems**
- 7. Inclusive decision-making**
- 8. Transparent and accessible information**
- 9. Effective actions against land grabbing**
- 10. Protected land rights defenders**

# NES Strategic Planning Framework



# NES process

- NES will be developed using participatory approach and broad-based consultations and discussions.
- Three regional meetings will be organised with interested stakeholders to discuss the NES outline and stakeholders views, ideas and proposals to be included in NES and Action Plan.
- Based on consultations and discussions the preliminary draft of NES will be developed.
- The preliminary draft of NES and Action Plan will be presented to participants of the National Workshop.
- NES Steering Committee will be coordination mechanism of NES platform.
- NES Committee will refine and finalise Country Strategy and Action Plan and shares with platform for feedback and approval.
- NES implementation: 2018-2021...
- NES M&E.



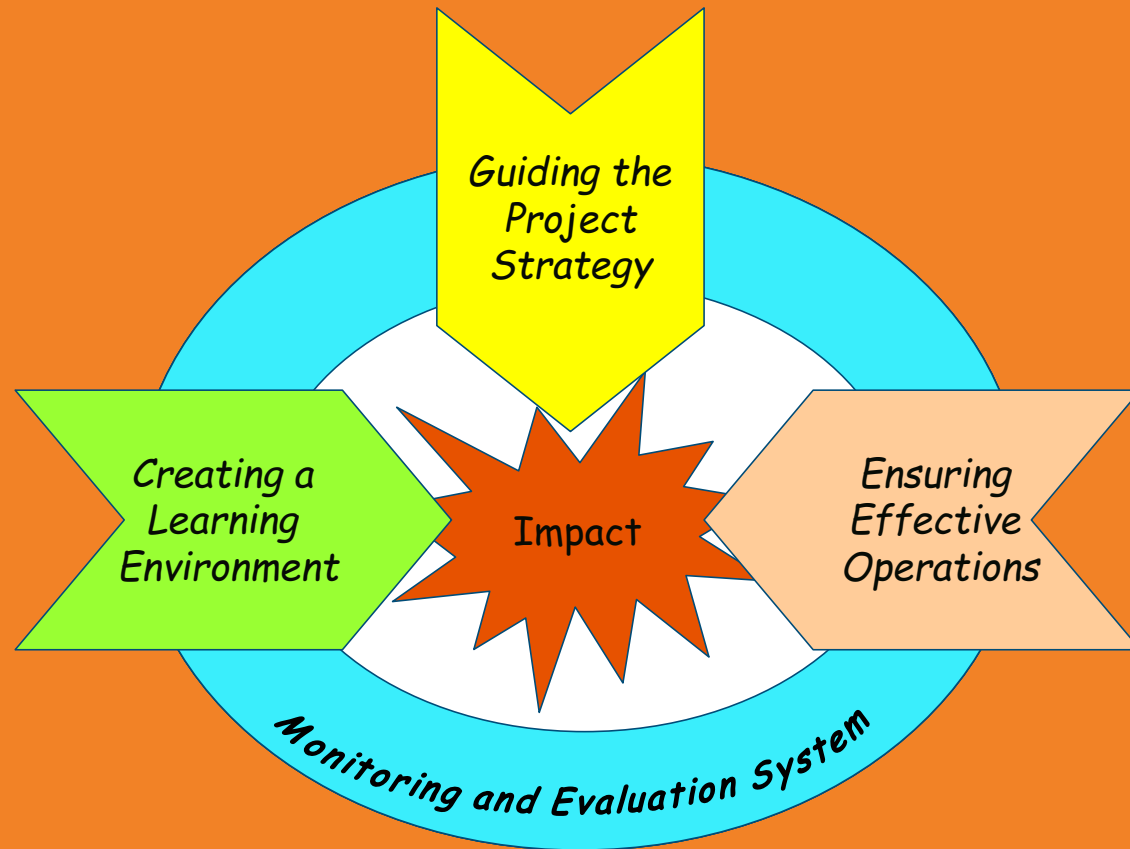
# Needs

- ❑ To allocate time and resources for PPM&E for a real transition in human **attitudes** toward the environment, and a **shift in behavior**.
- ❑ Provide information and knowledge in a form that the recipients can understand.
- ❑ All involved stakeholders need to learn and apply participation approaches – training, capacity building, especially for decision makers.
- ❑ To include all interested parties in all stages of the projects' cycle.
- ❑ To develop and apply incentives for changing attitudes.
- ❑ Training and resources for managing conflicts.
- ❑ Creating a learning environment in all initiatives.
- ❑ Coordination of actions among local, national and regional initiatives and projects.

# Managing for Impact

Development effectiveness

Capacities and conditions (internal and external)



# Genuine participation – the best practice to achieve SDG



**A 15-year plan to go beyond the previous  
15-plan - 2015**